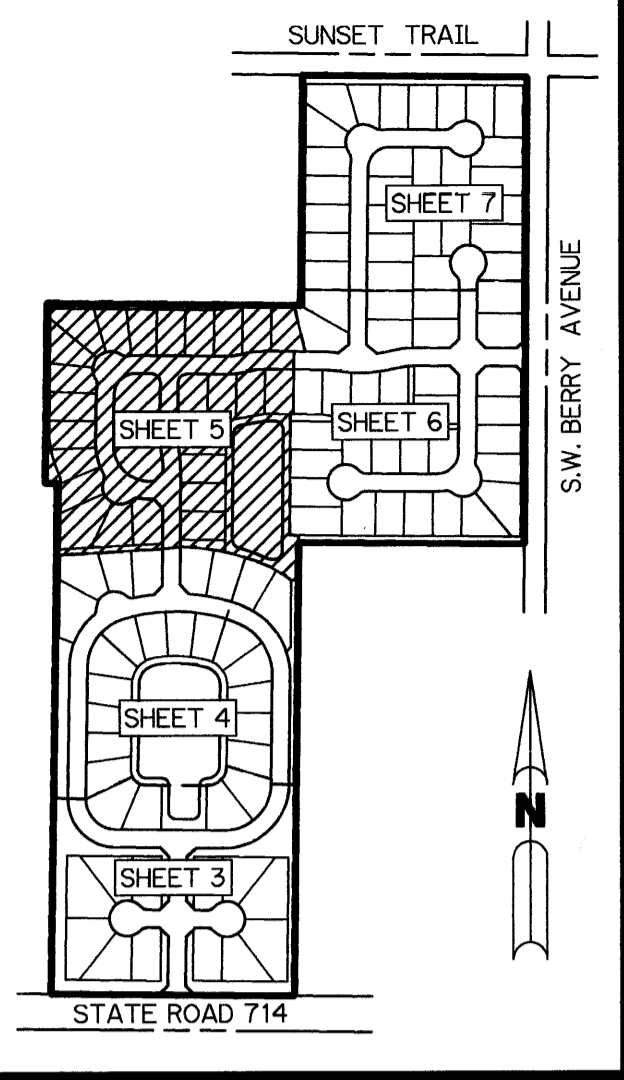


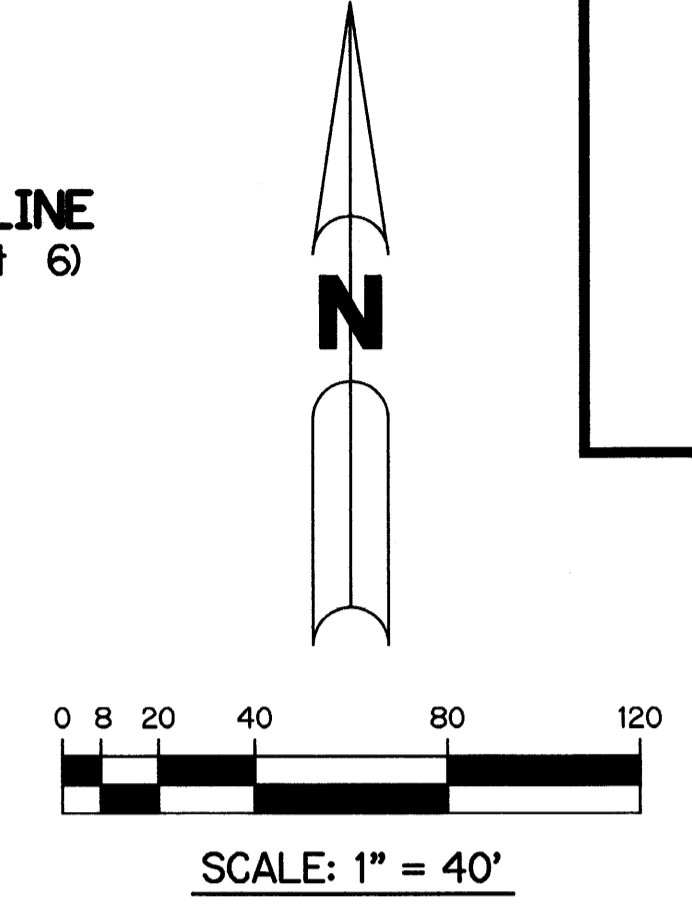
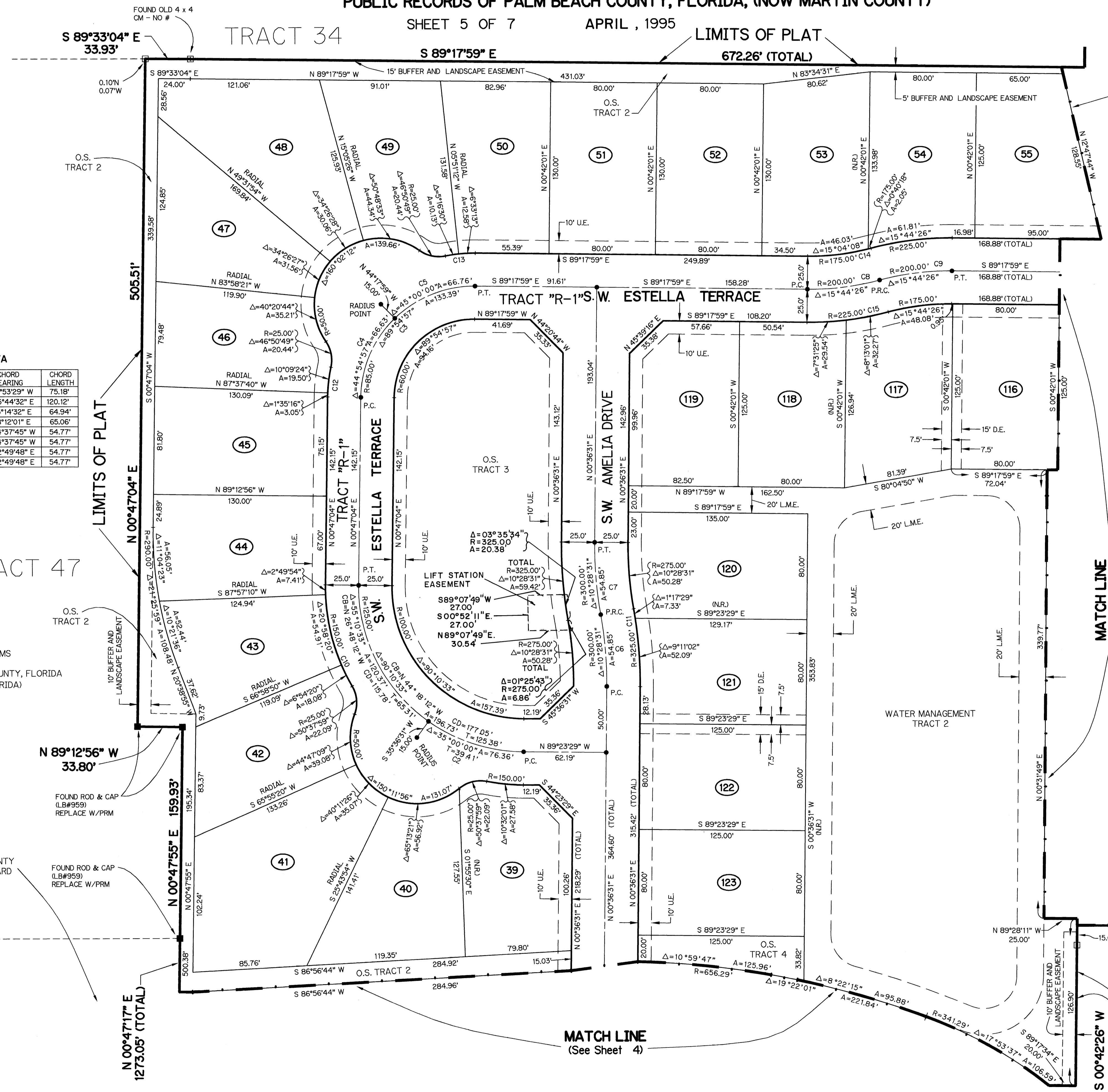
# MARTIN DOWNS P.U.D. PARCEL 44 - PLAT No. 68 - ISLESWORTH

LYING IN SECTION 13, TOWNSHIP 38 SOUTH, RANGE 40 EAST, MARTIN COUNTY, FLORIDA  
AND BEING A REPLAT OF TRACTS 33, 47, 48 AND 50 AND PART OF TRACTS 46 AND 63 PLAT OF PALM CITY FARMS, RECORDED IN PLAT BOOK 6, PAGE 42,  
PUBLIC RECORDS OF PALM BEACH COUNTY, FLORIDA, (NOW MARTIN COUNTY)

Plat Book 13  
Page 84  
File # 1127607  
Date: 7-27-69



KEY MAP  
N.T.S.



**CENTER LINE CURVE DATA**

CURVE NO.	RADIUS	DELTA (Δ)	ARC LENGTH	TANGENT	CHORD BEARING	CHORD LENGTH
C2	125.00'	35°00'00"	76.36'	39.41'	N 71°53'29" W	75.18'
C3	85.00'	89°54'57"	133.39'	84.88'	N 45°44'32" E	120.12'
C4	85.00'	44°54'57"	66.63'	35.14'	N 23°14'32" E	64.94'
C5	85.00'	45°00'00"	66.76'	35.21'	N 68°12'01" E	65.06'
C6	300.00'	10°28'31"	54.85'	27.50'	N 04°37'45" W	54.77'
C7	300.00'	10°28'31"	54.85'	27.50'	N 04°37'45" W	54.77'
C8	200.00'	15°44'26"	54.94'	27.65'	N 82°49'48" E	54.77'
C9	200.00'	15°44'26"	54.94'	27.65'	N 82°49'48" E	54.77'

**RIGHT-OF-WAY CURVE DATA**

CURVE NO.	RADIUS	DELTA (Δ)	ARC LENGTH
C10	150.00'	30°42'34"	80.40'
C11	325.00'	10°28'31"	59.42'
C12	110.00'	11°44'40"	22.55'
C13	110.00'	11°49'43"	22.71'
C14	175.00'	15°44'26"	48.08'
C15	225.00'	15°44'26"	61.81'

- LEGEND:**
- - PERMANENT REFERENCE MONUMENT, PLS #3864
  - - PERMANENT REFERENCE MONUMENT, LB #959
  - - PERMANENT CONTROL POINT, PLS #3864
  - Δ - DELTA ANGLE
  - A - ARC LENGTH
  - T - TANGENT LENGTH
  - P.T. - POINT OF TANGENCY
  - P.C. - POINT OF CURVATURE
  - P.R.C. - POINT OF REVERSE CURVE
  - P.C.C. - POINT OF COMPOUND CURVE
  - C.B. - CHORD BEARING
  - C.H.D. - CHORD LENGTH
  - U.E. - UTILITY EASEMENT
  - D.E. - DRAINAGE EASEMENT
  - L.A.E. - LIMITED ACCESS EASEMENT
  - L.B. - LANDSCAPE BUFFER
  - W.M.E. - WATER MANAGEMENT EASEMENT
  - L.M.E. - LAKE MAINTENANCE EASEMENT
  - N.R. - NOT RADIAL
  - N.T.S. - NOT TO SCALE
  - O.R.B. - OFFICIAL RECORD BOOK
  - P.B. - PLAT BOOK
  - PGS. - PAGES
  - P.L.S. - PROFESSIONAL LAND SURVEYOR
  - P.R.M. - PERMANENT REFERENCE MONUMENT
  - S.T. - SURVEY TIE
  - TYP. - TYPICAL
  - COR. - CORNER
  - N.R. - NON RADIAL
  - OS - OPEN SPACE
  - CL - CENTERLINE

- NOTES**
- THERE SHALL BE NO BUILDING OR ANY OTHER KIND OF CONSTRUCTION OR TREES OR SHRUBS PLACED ON DRAINAGE EASEMENTS.
  - THERE SHALL BE NO BUILDING OR OTHER PERMANENT STRUCTURES OR TREES OR SHRUBS ON UTILITY EASEMENTS.
  - BEARING BASE - THE SOUTH LINE OF THE SOUTHEAST QUARTER OF SECTION 13-38-40 IS TAKEN AS BEING SOUTH 89°23'29" EAST AND ALL OTHER BEARINGS ARE RELATIVE THERETO.
  - NOTICE: THERE MAY BE ADDITIONAL RESTRICTIONS THAT ARE NOT RECORDED ON THIS PLAT THAT MAY BE FOUND IN THE PUBLIC RECORDS OF MARTIN COUNTY.

THIS INSTRUMENT PREPARED BY  
MICHAEL T. KOLODZIEJCZYK P.L.S. 3864 STATE OF FLORIDA  
LAWSON, NOBLE AND ASSOCIATES, INC.  
ENGINEERS PLANNERS SURVEYORS  
PORT ST. LUCIE, FLORIDA

PLAT OF PALM CITY FARMS  
P.B. 6, PAGE 42  
PUBLIC RECORDS OF PALM BEACH COUNTY, FLORIDA  
(NOW MARTIN COUNTY, FLORIDA)